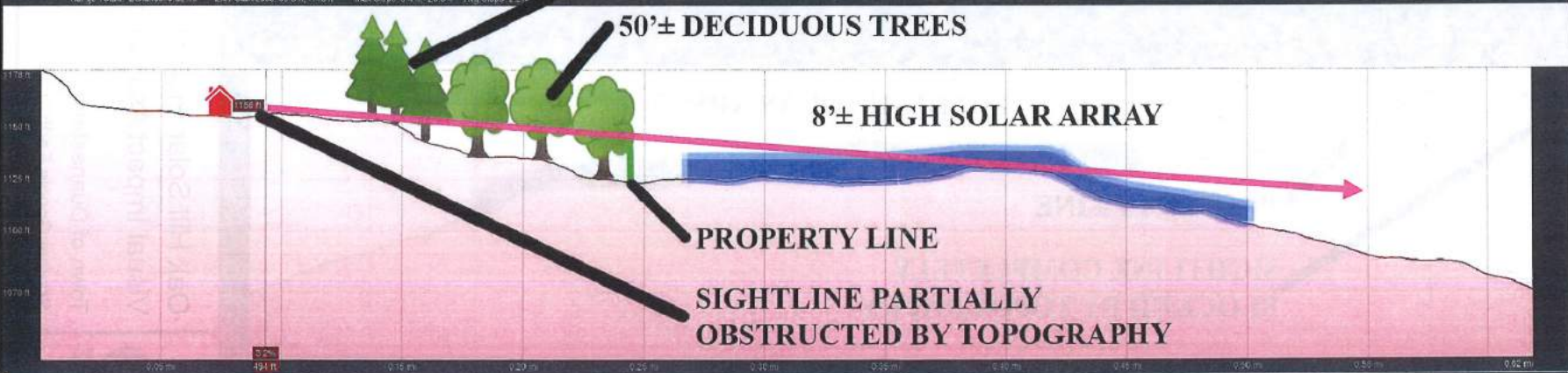




The Environmental Design Partnership, LLP
© 2019

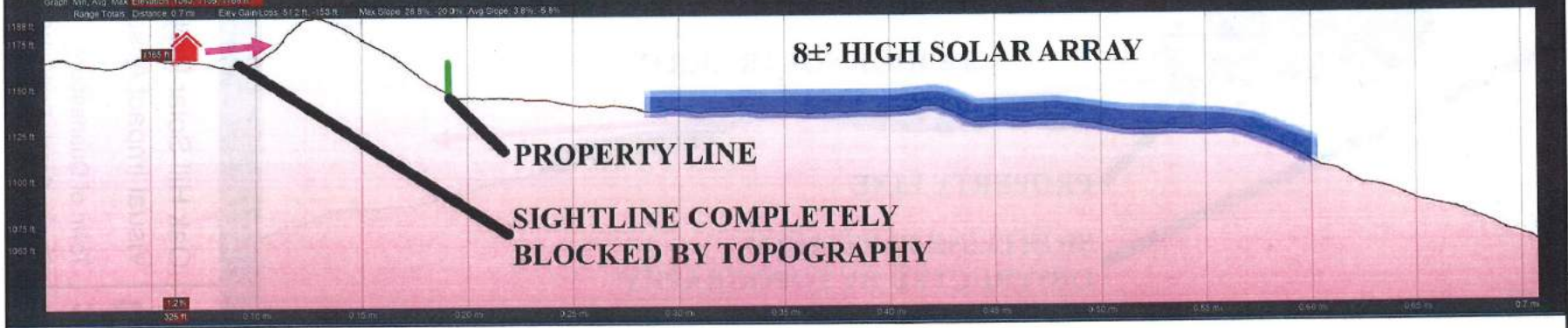
Figure:
1

Schenectady County, NY
August 13, 2019



Oak Hill Solar Project
Visual Impact Assessment
Town of Duaneburg
Source: Google Earth 2019





The Environmental Design Partnership, LLP
 © 2019

Figure:
 2

Oak Hill Solar Project
 Visual Impact Assessment
 Town of Duaneburg
 Source: Google Earth 2019

Schenectady County, NY
 August 13, 2019



Oak Hill Solar Project
© 2019

Legend
© 2019



BALLOON LOCATIONS

VIEWSHED MAP

The Environmental
Design Partnership, LLP
© 2019

Oak Hill Solar Project Visual Impact Assessment

Schenectady County, NY
August 13, 2019

Figure:
3

Town of Duaneburg
Source: Google Earth 2019



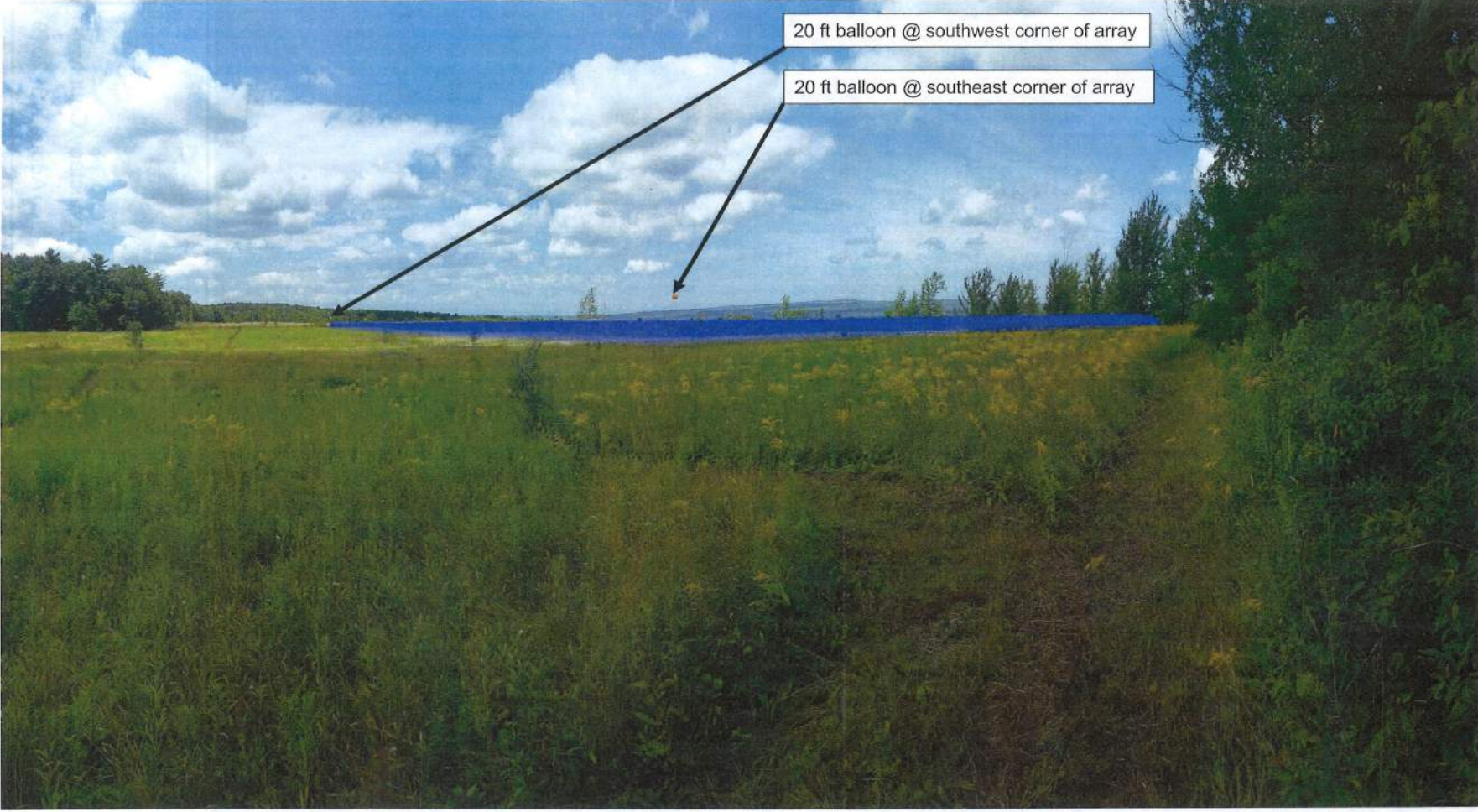


PHOTO 1: LOOKING NORTHWEST FROM PROPERTY LINE

The Environmental Design Partnership, LLP
© 2019

Figure:
4

Oak Hill Solar Project
Visual Impact Assessment

Schenectady County, NY
August 13, 2019

Town of Duaneburg
Source: Google Earth 2019





NEIGHBORING HOUSE

NEIGHBORING HOUSE

PROPERTY LINE

PHOTO 2: LOOKING SOUTHEAST ACROSS PROPERTY LINE

The Environmental Design Partnership, LLP
© 2019

Figure:
5

Oak Hill Solar Project
Visual Impact Assessment

Schenectady County, NY
August 13, 2019

Town of Duaneburg
Source: Google Earth 2019





PHOTOGRAPHS FROM SOLAR FARM PROPERTY LOOKING EAST TOWARD BIGGS RESIDENCE

The Environmental Design Partnership, LLP
© 2019

Figure:
6

Schenectady County, NY
August 13, 2019

Oak Hill Solar Project
Visual Impact Assessment

Town of Duaneburg
Source: Google Earth 2019

